

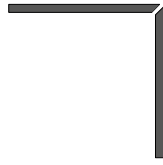
**DESIGN
LUCE**

ZER065 xp

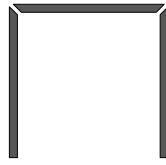


DISEGNIAMO CON LA LUCE

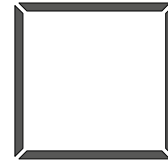




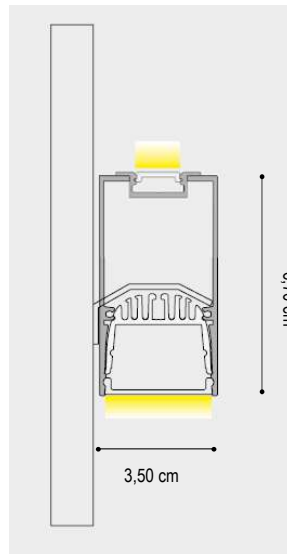
**A. COMPOSIZIONE ANGOLARE
A "L"**
A. L-ANGLE COMPOSITION



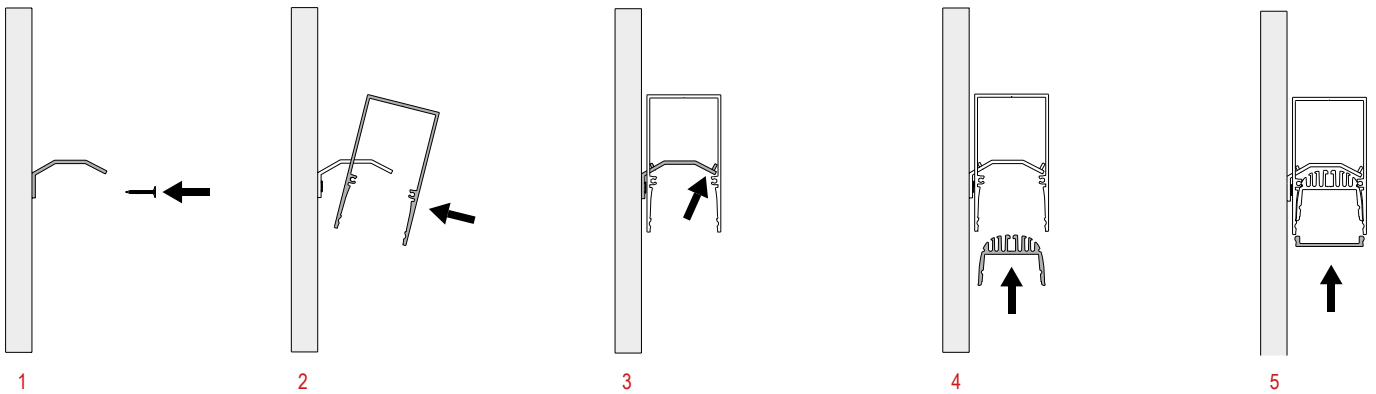
**B. COMPOSIZIONE ANGOLARE
A "C"**
B. C-ANGLE COMPOSITION

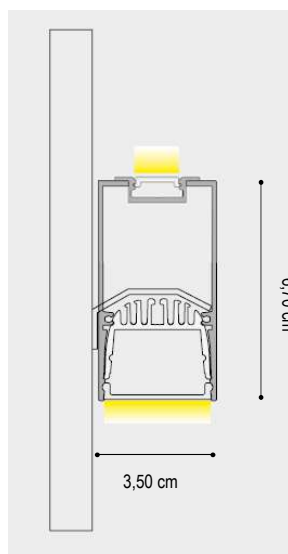


**C. COMPOSIZIONE POLIGONALE
(QUADRATO/RETTANGOLO)**
C. POLYGONAL COMPOSITION
(SQUARE / RECTANGLE)



INSTALLAZIONE STAFFA A PARETE WALL BRACKET INSTALLATION





DATI TECNICI TECHNICAL DATA

	1 cm - 40W/m	200 cm - 80W	300 cm - 120W
Nominal LED Flux:	↑ 2200 lm/m - 2200 lm/m ↓	↑ 4400 lm - 4400 lm ↓	↑ 6600 lm - 6600 lm ↓
Flux Tot:	↑ 1760 lm/m - 1760 lm/m ↓	↑ 3520 lm - 3520 lm ↓	↑ 5280 lm - 5280 lm ↓
Output:	105 lm/W	105 lm/W	105 lm/W
CCT:	3000 K	3000 K	3000 K
CRI:	>95	>95	>95
Power:	↑ 20.0W/m - 20.0W/m ↓	↑ 40.0W - 40.0W ↓	↑ 60.0W - 60.0W ↓
Power Tot:	40.0W/m	80.0W	120.0W
Weight:	1.40 Kg/m	2.80 Kg	4.20 Kg
Alluminio/aluminium		Cover: Opale/opal - Satinato/Satin	

DATI TECNICI TECHNICAL DATA

	1 cm - 60W/m	200 cm - 120W	300 cm - 180W
Nominal LED Flux:	↑ 4050 lm/m - 4050 lm/m ↓	↑ 8100 lm - 8100 lm ↓	↑ 12150 lm - 12150 lm ↓
Flux Tot:	↑ 3510 lm/m - 3510 lm/m ↓	↑ 7020 lm - 7020 lm ↓	↑ 10530 lm - 10530 lm ↓
Output:	135 lm/W	135 lm/W	135 lm/W
CCT:	3000 K	3000 K	3000 K
CRI:	>95	>95	>95
Power:	↑ 30.0W/m - 30.0W/m ↓	↑ 60.0W - 60.0W ↓	↑ 90.0W - 90.0W ↓
Power Tot:	60.0W/m	120.0W	180.0W
Weight:	1.40 Kg/m	2.80 Kg	4.20 Kg
Alluminio/aluminium		Cover: Opale/opal - Satinato/Satin	

DATI TECNICI
TECHNICAL DATA

	1 cm - 40W/m	200 cm - 80W	300 cm - 120W
Nominal LED Flux:	↑ 2200 lm/m - 2200 lm/m ↓	↑ 4400 lm - 4400 lm ↓	↑ 6600 lm - 6600 lm ↓
Flux Tot:	↑ 1760 lm/m - 1760 lm/m ↓	↑ 3520 lm - 3520 lm ↓	↑ 5280 lm - 5280 lm ↓
Output:	105 lm/W	105 lm/W	105 lm/W
CCT:	3000 K	3000 K	3000 K
CRI:	>95	>95	>95
Power:	↑ 20.0W/m - 20.0W/m ↓	↑ 40.0W - 40.0W ↓	↑ 60.0W - 60.0W ↓
Power Tot:	40.0W/m	80.0W	120.0W
Weight:	1.40 Kg/m	2.80 Kg	4.20 Kg

Alluminio/aluminium Cover: Satinato/Satin
Prismattizzato/Prismatic

DATI TECNICI
TECHNICAL DATA

	1 cm - 40W/m	200 cm - 80W	300 cm - 120W
Nominal LED Flux:	↑ 4440 lm/m - 4440 lm/m ↓	↑ 8880 lm - 8880 lm ↓	↑ 13320 lm - 13320 lm ↓
Flux Tot:	↑ 3552 lm/m - 3552 lm/m ↓	↑ 7104 lm - 7104 lm ↓	↑ 10656 lm - 10656 lm ↓
Output:	148 lm/W	148 lm/W	148 lm/W
CCT:	3000 K	3000 K	3000 K
CRI:	>90	>90	>90
Power:	↑ 30.0W/m - 30.0W/m ↓	↑ 60.0W - 60.0W ↓	↑ 90.0W - 90.0W ↓
Power Tot:	60.0W/m	120.0W	180.0W
Weight:	1.40 Kg/m	2.80 Kg	4.20 Kg

Alluminio/aluminium Cover: Satinato/Satin
Prismattizzato/Prismatic

FINITURE / FINISHES

